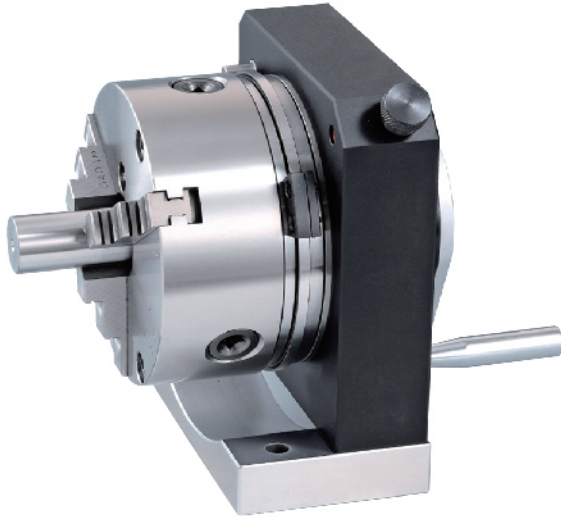




● MCL-5500



N.W.24.3kg

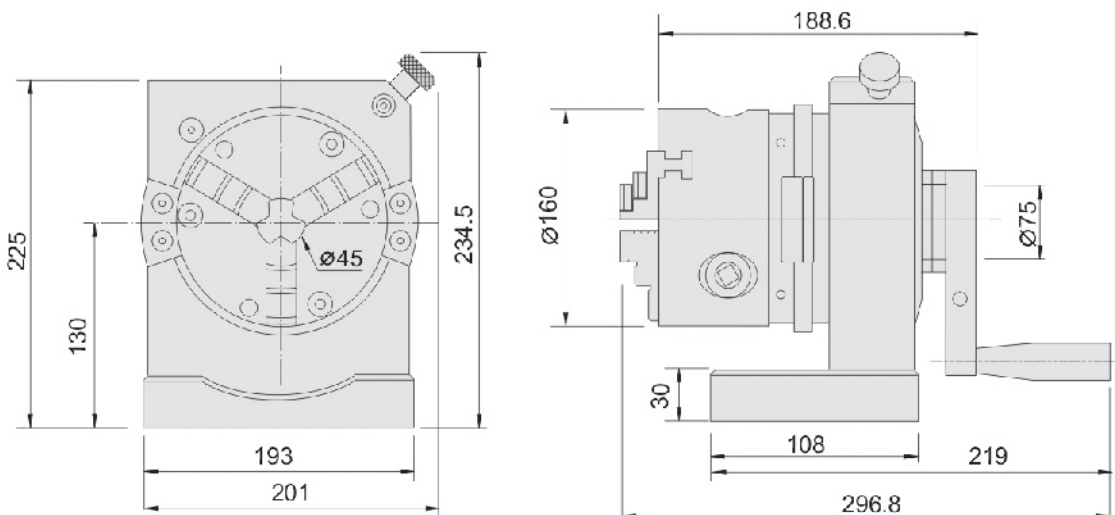
■規格:

- 中心高度：130mm
- 分割24等份、分度15度.±5"
- 貫穿孔直徑：φ45mm
- 三爪卡盤孔徑：φ45mm
- 三爪重複精度：0.015mm
- 最小夾持直徑：外徑φ4mm. 內徑 φ48mm
- 最大夾持直徑：外徑φ160mm. 內徑φ150mm

■Specifications:

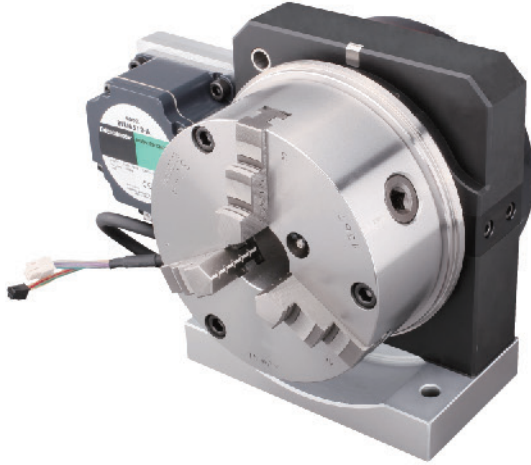
- Center height: 130 ±0.5mm
- Indexer tooth quantity and accuracy: 24、15 φ±5"
- Through hole diameters: φ45mm
- Hole dia. of 3-jaw check: φ45mm
- Min. clamping range: Outer Dia. φ4mm / Internal Dia. φ48mm
- Max. clamping range: Outer Dia. φ160mm / Internal Dia. φ150mm
- Repeat accuracy: within 0.015mm

- 三爪易於夾持工件，拆卸容易，使用方便快速。
- 因三爪夾頭的累積公差，夾持不同大小工件時會有所差異，所以設計有水平及同心度調整功能，使用者可自行調整。
- 附有反爪配件可供較大外徑工件的夾持。
- Provide rapid clamping and it suitable for mass production, workpiece with round shaped can precisely and rapidly clamped.
- Due to accumulated tolerance when clamping different sizes of workpiece, special design in adjustment of horizontal and roundness for user own application.
- Further Jaw attachment can clamp workpiece with larger diameters.





● MCL-5500A



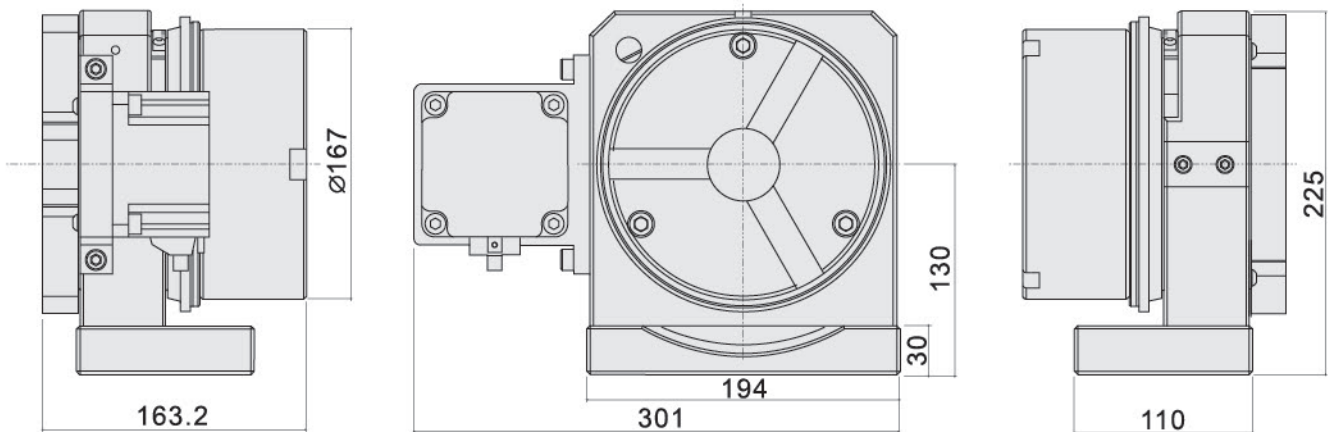
■規格:

- 中心高度：130mm
- 分割24等份、分度15度.±5"
- 貫穿孔直徑：φ 45mm
- 三爪卡盤孔徑：φ 45mm
- 三爪重複精度：0.015mm
- 最小夾持直徑：外徑φ 4mm. 內徑 φ 48mm
- 最大夾持直徑：外徑φ 160mm. 內徑φ 150mm
- 主座回轉精度：0.003mm
- 三爪卡盤重複夾持精度：0.015mm

■Specifications:

- Center height: 130 ± 0.5mm
- Indexer tooth q' ty and accuracy: 24、15 φ ± 5"
- Through hole diameters: φ 45mm
- Hole dia. of 3-jaw check: φ 45mm
- Min. clamping range: Outer Dia. φ 4mm / Internal Dia. φ 48mm
- Max. clamping range: Outer Dia. φ 160mm / Internal Dia. φ 150mm
- Rotational accuracy: 0.003mm
- Repeat accuracy: within 0.015mm

- MCL-5500A大型三爪電動沖子成型器具較佳之結構強度與耐用性，具防水特性。由馬達帶動，可避免手搖而產生疲勞現象。可在短時間內研磨沖子成圓形。
- MCL-5500A沖子成型器為方便使用，特別加上三爪夾頭，可快速的將工件夾持使用。因三爪夾頭的累積公差夾持不同大小工件時會有所差異，所以設計有水平及真圓的調整功能供使用者自行調整，所以本機較適用於大批量的生產使用。
- 附有反爪配件可供較大外徑工件的夾持。
- 採用高精密雙組軸承的主軸設計，以達到高精度及穩定性。並有傳統型數倍以上的壽命。
- Have stronger structure leading lasting durability.
- Motorised function prevent human fatigue when processing.
- Provide rapid clamping and it suitable for mass production, workpiece with round shaped can precisely and rapidly clamped.
- Due to accumulated tolerance when clamping different sizes of workpiece, special design in adjustment of horizontal and roundness for user own application.
- Further Jaw attachment can clamp workpiece with larger diameters.
- Adopting high precision double bearings in its structure to achieve higher accuracy, rigidity and stability.



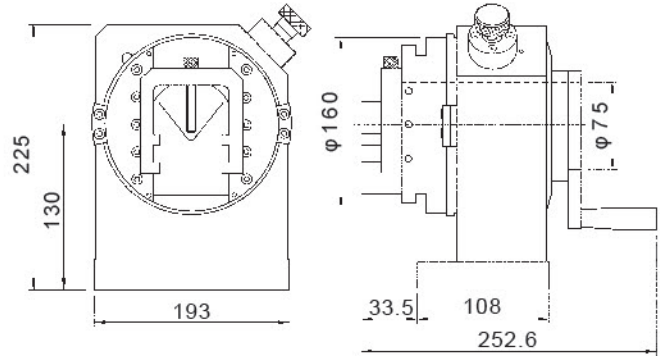
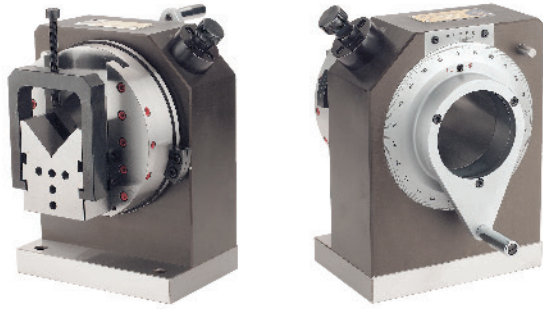
訂購編號 Order No.	型號 Model	馬達 Motor	重量(kg) Weight
31028-11	MCL-5500A×110V	110V / 60Hz 50~550 R.P.M	30
31028-22	MCL-5500A×220V	220V / 50Hz 50~550 R.P.M	30



31030

大型沖子研磨器 PUNCH FORMER (ONE WAY)

● MCL-3500



- 適合研磨直徑70MM以下的大型沖子頭，較適用於818以上的平面磨床機台。
- V型塊設計穩固，可精確的固定工件物，並有上下微調功能。
- 本體有中心穿孔設計，可供較長的沖頭及梢延伸而過，而得以挾持加工。
- MCL-3500 is adaptable on surface grinder above 818mm² to clamp punches within $\phi 70$ mm for grinding various shapes.
- The V-block with fine tuning function can fix workpiece steadily and accurately.
- Design of a through hole, for a longer extension of the punch and shoot over, and be held hostage by working.

■規格:

- V型塊最大挾持範圍: $\phi 70$ mm
- V型塊上下調整範圍: 各30mm
- 分割24等份、分度 $15^\circ \pm 5''$
- 重量:23.6kg

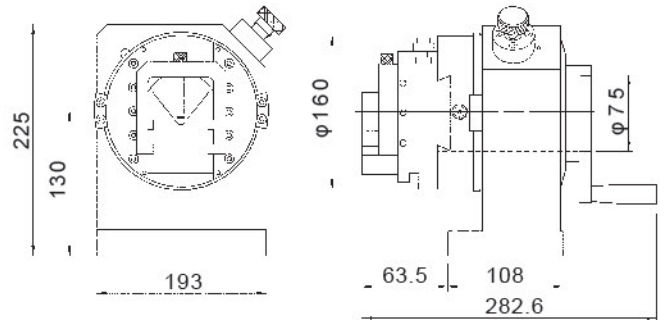
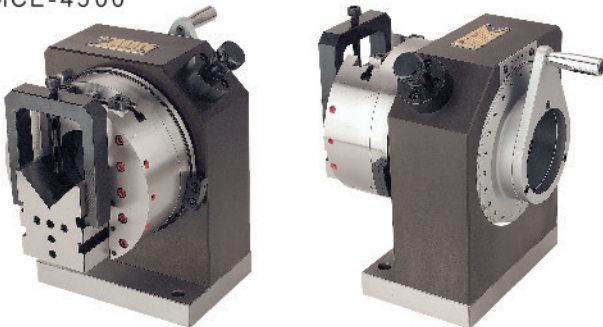
■Specifications:

- Max champing diameter in V-slot: $\phi 70$ mm
- Travel of V-block:30mm
- Quantity of tooth:24
- Accuracy of disk: $15^\circ \pm 5''$
- Weight:23.6kg

31032

雙向大型沖子研磨器 PUNCH FORMER (TWO WAY)

● MCL-4500



- 雙向活動設計，適合818平面磨床上研磨各種形狀。
- 左右設有移動功能及固定塊供橢圓形研磨用，可快速精密研磨成型。
- V型塊設計穩固，上下微調功能，可精確的調整中心。左右大量移動時，可拆下微調螺桿，用固定塊定位，方便使用研磨橢圓形工件。
- MCL-4500 can be put on grinder machine with 818mm² to clamp large punches.
- It can shape quickly and precisely, with the moving function in left & right side and fixing block for oval grinding.
- The fine tuning function can adjust centre accurately. Using the fixing block and folding down the screw when large move is needed for left & right, can grind oval workpiece conveniently.

■規格:

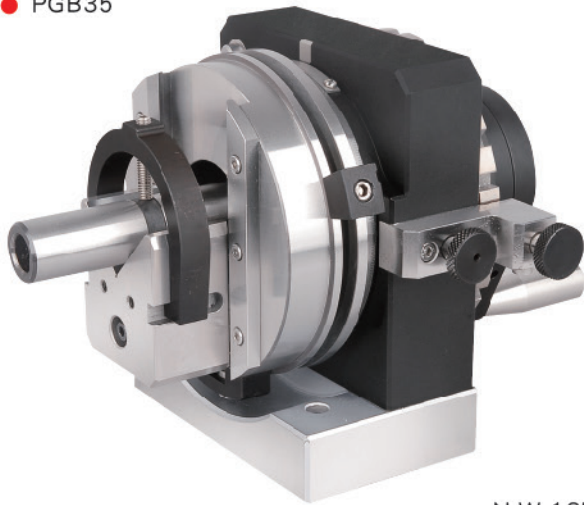
- V型塊最大挾持範圍: $\phi 70$ mm
- V型塊上下調整範圍: 各30mm
- 滑板左右移動範圍: 各30mm
- 分割24等份、分度 $15^\circ \pm 5''$
- 重量:27kg

■Specifications:

- Max champing diameter in V-slot: $\phi 70$ mm
- Travel of V-block:30mm
- Trans versal travel of slider:30mm
- Quantity of tooth:24
- Accuracy of disk: $15^\circ \pm 5''$
- Weight:27kg

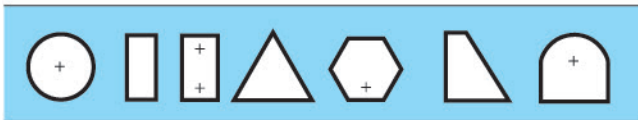


● PGB35



N.W.13kg

■ V型塊非不鏽鋼製作。
V block is not made of stainless steel.



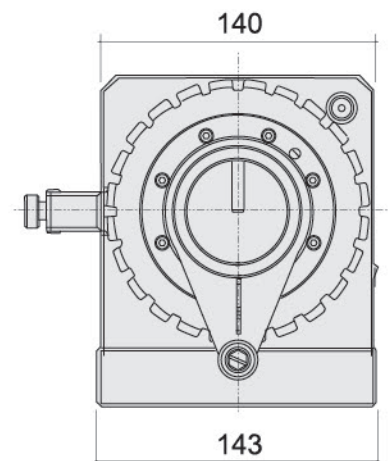
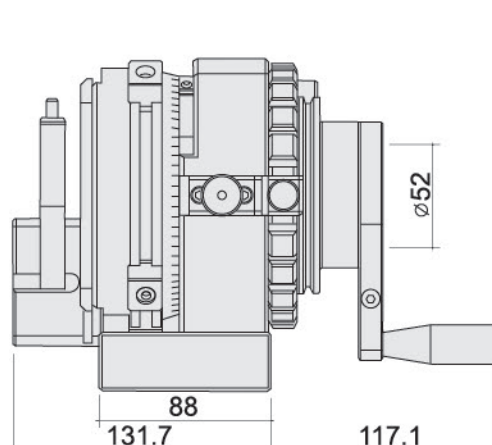
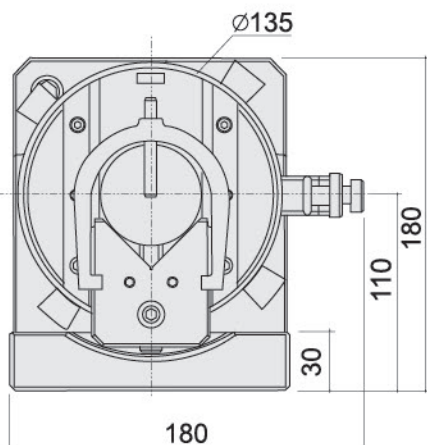
■規格:

- 中心高：110±0.5mm
- V型槽夾持直徑：φ5~50mm
- V型塊調整量：34mm
- 分割24等份、分度15度.±5"
- 貫穿孔直徑：φ52mm
- 夾持偏擺精度（50mm）：0.005mm

■Specifications:

- Center height: 110 ±0.5mm
- Clamping dia. range of V-block: φ5-50mm
- Travel of V-block: 34mm
- Indexer tooth q'ty and accuracy: 24(Every 15°)±5"
- Through hole diameters: φ52mm
- Clamping accuracy (50mm): 0.005mm

- PGB35精級中型單向沖子成型器具較佳之結構強度與耐用性，具防水特性，適用於成形平面磨床，對於各種形狀的沖頭可精確及快速的進行磨削加工，並可用於放電加工機床所使用的電極進行加工。
- PGB35沖子成型器特別有中心貫穿孔，可供過長的沖頭及射稍使其延伸而得以夾持加工。
- 本機V型設計壓板能穩固及精確的固定工件，並有上下微調功能，要校正中心，極為容易。
- 採用高精度雙組軸承的主軸設計，以達到高精度及穩定性，並有傳統型數倍以上的壽命。
- Precision punch former has stronger compact structure and long lasting durability.
- Suitable for application on surface grinding machine, EDM machines and capable of forming various shapes of punches.
- Trough hole design for longer punch & ejector pins to be clamped in processing.
- V-block clamping design can accurately stabilize the workpieces and vertical fine-tuning function makes easier for setting center easier.
- Adopting high precision double bearing in its structure to achieve higher accuracy, rigidity and stability.
- Stopper design in position slot and easier for precisely stabilize polygonal punches.
- Improvement in dust-proof and water resistance.

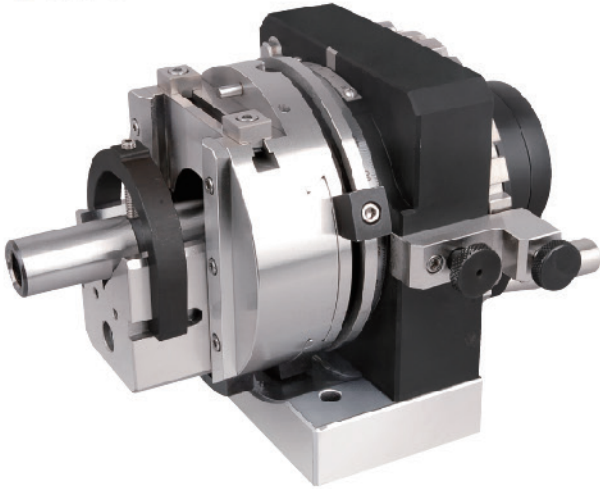




31180

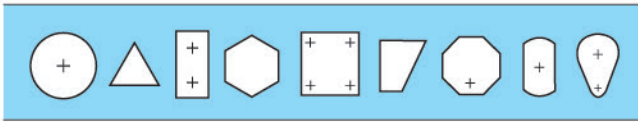
精密級中型雙向沖子成型器 PRECISION PUNCH FORMER (MEDIUM TYPE)

● PGB45



■ V型塊非不鏽鋼製作。
V block is not made of stainless steel.

N.W.14.7kg



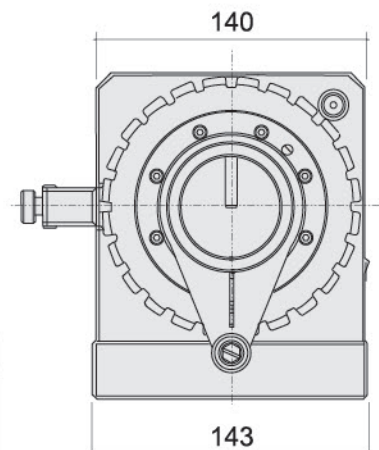
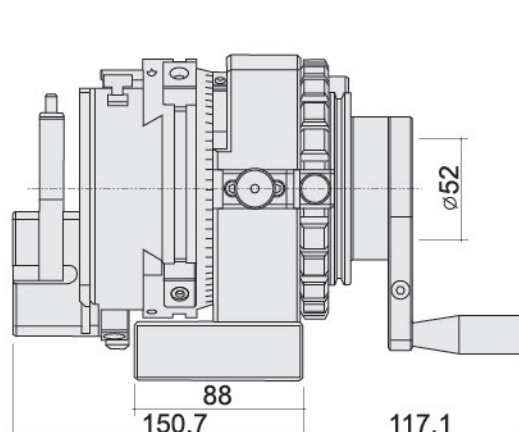
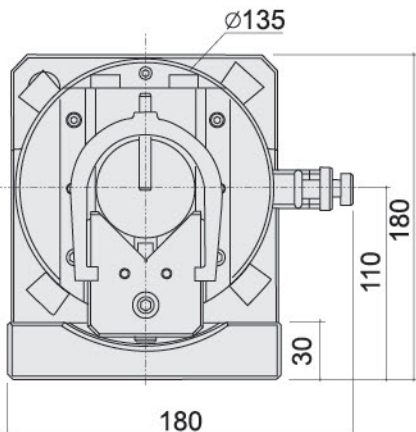
■ 規格:

- 中心高：110 ± 0.5mm
- V型槽夾持直徑：φ 5 ~ 50mm
- V型塊調整量：36mm
- 分割24等份、分度15度. ± 5"
- 夾持偏擺精度 (50mm)：0.005mm
- 滑動盤橫向移動量：± 25mm

■ Specifications:

- Center height: 110 ± 0.5mm
- Clamping dia. range of V-block: φ 5-50mm
- Travel of V-block: 36mm
- Indexer tooth q' ty and accuracy: 24(Every 15°) ± 5"
- Clamping accuracy (50mm): 0.005mm
- Slide plate horizontal movement: ± 25mm

- PGB45精級中型雙向沖子成型器具較佳之結構強度與耐用性，具防水特性，適用於成形平面磨床，對於各種形狀的沖頭可精確及快速的進行磨削加工，並可用於放電加工機床所使用的電極進行加工。
- 本產品由于有上下左右調整的功能，特別適用於橢圓形沖頭的加工。
- 本機V型設計壓板能穩固及精確的固定工件，並有上下微調功能，要校正中心，極為容易。
- 採用高精密雙組軸承的主軸設計，以達到高精度及穩定性。並有傳統型數倍以上的壽命。
- Precision punch former has stronger compact structure and long lasting durability.
- Suitable for application on surface grinding machine, EDM machines and capable of forming various shapes of punches.
- Due to its vertical and horizontal adjustment function, it is specially suitable for oval punch grinding.
- V-block clamping design can accurately stabilize the workpieces and vertical fine-tuning function makes setting center easier.
- Adopting high precision double bearing in its structure to achieve higher accuracy, rigidity and stability.
- Stopper design in position slot and easier for precisely stabilize polygonal punches.
- Improvement in dust-proof and water resistance.



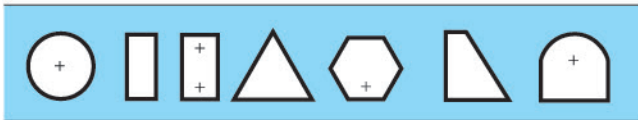


● PGA3500



N.W.23.5kg

■ V型塊非不鏽鋼製作。
V block is not made of stainless steel.



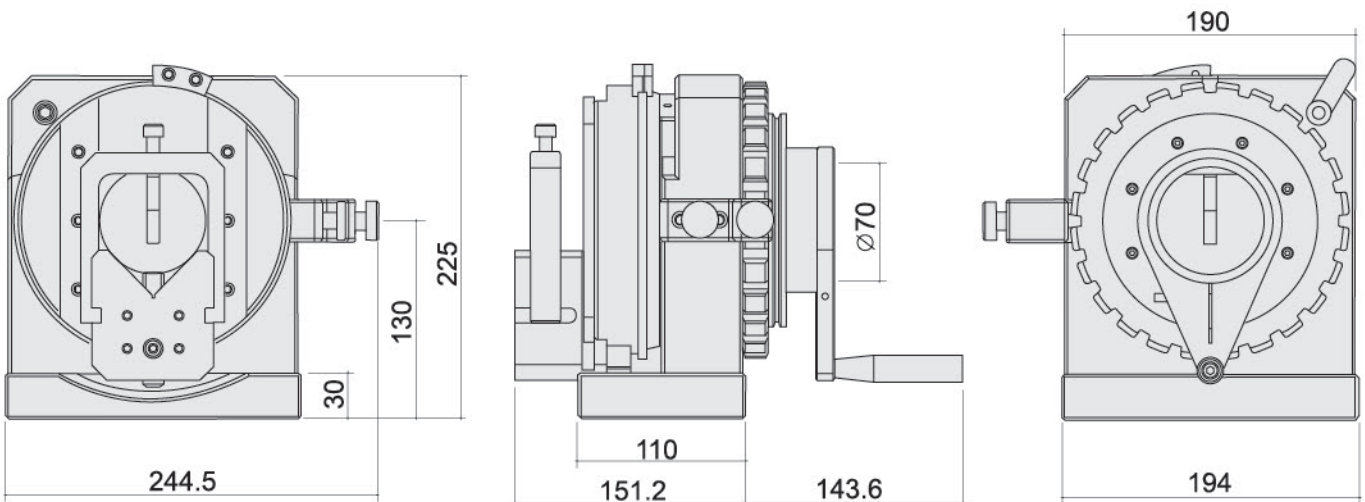
■規格:

- 中心高：130 ± 0.5mm
- V型槽夾持直徑：φ 3~69.5mm
- V型塊調整量：48mm
- 分割24等份、分度15度.±5"
- 貫穿孔直徑：φ 72mm
- 夾持偏擺精度（50mm）：0.005mm

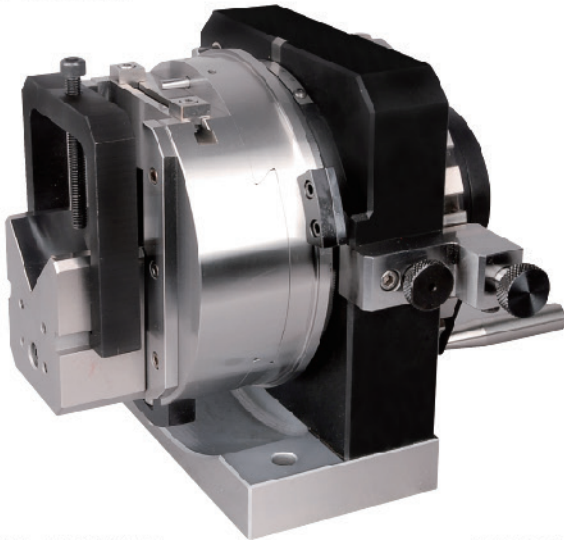
■Specifications:

- Center height: 130 ± 0.5mm
- Clamping dia. range of V-block: φ 3-69.5mm
- Travel of V-block: 48mm
- Indexer tooth q' ty and accuracy: 24(Every 15°)±5"
- Through hole diameters: φ 72mm
- Clamping accuracy (50mm): 0.005mm

- PGA3500精級大型單向沖子成型器具較佳之結構強度與耐用性，具防水特性，適用於成形平面磨床，對於各種形狀的沖頭可精確及快速的進行磨削加工，並可用於放電加工機床所使用的電極進行加工。
- PGA3500沖子成型器特別有中心貫穿孔，可供過長的沖頭及射梢使其延伸而得以夾持加工。
- 本機V型設計壓板能穩固及精確的固定工件，並有上下微調功能。
- 採用高精密雙組軸承的主軸設計，以達到高精度及穩定性，並有傳統型數倍以上的壽命。
- Precision punch former has stronger compact structure and long lasting durability.
- Suitable for application on surface grinding machine, EDM machines and capable of forming various shapes of punches.
- Trough hole design for longer punch & ejector pins to be clamped in processing.
- V-block clamping design can accurately stabilize the workpieces and vertical fine-tuning function makes setting center easier.
- Adopting high precision double bearing in its structure to achieve higher accuracy, rigidity and stability.
- Stopper design in position slot and easier for precisely stabilize polygonal punches.
- Improvement in dust-proof and water resistance.

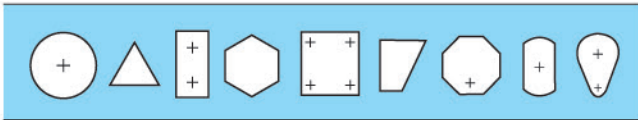


● PGA4500



■ V型塊非不鏽鋼製作。
V block is not made of stainless steel.

N.W.27kg



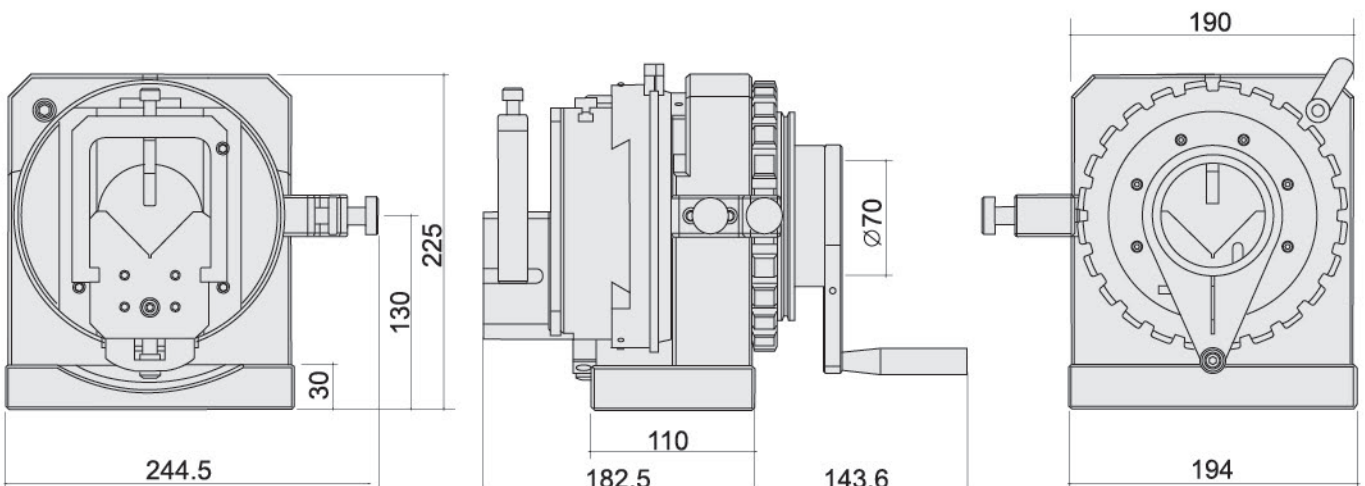
■ 規格:

- 中心高：130 ± 0.5mm
- V型槽夾持直徑：φ3~69.5mm
- V型塊調整量：48mm
- 分割24等份、分度15度. ± 5"
- 夾持偏擺精度 (50mm)：0.005mm
- 滑動盤橫向移動量：± 30mm

■ Specifications:

- Center height: 130 ± 0.5mm
- Clamping dia. range of V-block: φ3-69.5mm
- Travel of V-block: 48mm
- Indexer tooth q' ty and accuracy: 24(Every 15°) ± 5"
- Clamping accuracy (50mm): 0.005mm
- Slide plate horizontal movement: ± 30mm

- PGA4500精級大型雙向沖子成型器具較佳之結構強度與耐用性，具防水特性，適用於成形平面磨床，對於各種形狀的沖頭可精確及快速的進行磨削加工，並可用於放電加工機床所使用的電極進行加工。
- 本產品由于有上下左右調整的功能，特別適用於橢圓形沖頭的加工。
- 本機V型設計壓板能穩固及精確的固定工件，並有上下微調功能，要校正中心，極為容易。
- 採用高精度雙組軸承的主軸設計，以達到高精度及穩定性，並有傳統型數倍以上的壽命。
- Precision punch former has stronger compact structure and long lasting durability.
- Suitable for application on surface grinding machine, EDM machines and capable of forming various shapes of punches.
- Due to its vertical and horizontal adjustment function, it is specially suitable for oval punch grinding.
- V-block clamping design can accurately stabilize the workpieces and vertical fine-tuning function makes setting center easier.
- Adopting high precision double bearing in its structure to achieve higher accuracy, rigidity and stability.
- Stopper design in position slot and easier for precisely stabilize polygonal punches.
- Improvement in dust-proof and water resistance.





● PGA5500



N.W.27kg

■規格:

- 中心高度：130±0.5mm
- 分割24等份、分度15度.±5"
- 貫穿孔直徑：φ 45mm
- 三爪孔徑：φ 45mm
- 主座回轉精度：0.003mm
- 三爪卡盤重複夾持精度：0.015mm
- 最小夾持直徑：外徑 φ 4mm. 內徑 φ 48mm
- 最大夾持直徑：外徑 φ 160mm. 內徑 φ 150mm

■Specifications:

- Center height: 130 ±0.5mm
- Indexer tooth q' ty and accuracy: 24、15 φ ±5"
- Through hole diameters: φ 45mm
- Hole dia. of 3-jaw check: φ 45mm
- Min. clamping range: Outer Dia. φ 4mm / Internal Dia. φ 48mm
- Max. clamping range: Outer Dia. φ 160mm / Internal Dia. φ 150mm
- Rotational accuracy: 0.003mm
- Repeat accuracy: 0.015mm

- PGA5500精級大型三爪沖子成型器具較佳之結構強度與耐用性，具防水特性。
- PGA5500沖子成型器為方便使用，特別加上三爪夾頭，可快速的將工件夾持使用。因三爪夾頭的累積公差夾持不同大小工件時會有所差異，所以設計有水平及真圓的調整功能供使用者自行調整，所以本機較適用於大批量的生產使用。
- 附有反爪配件可供較大外徑工件的夾持。
- 採用高精密雙組軸承的主軸設計，以達到高精度及穩定性。並有傳統型數倍以上的壽命。
- Have stronger structure leading lasting durability.
- Provide rapid clamping and it suitable for mass production workpiece with round shaped can precisely and rapidly clamped.
- Due to accumulated tolerance when clamping different sizes of workpiece, special design in adjustment of horizontal and roundness for user own application.
- Further jaw attachment can clamp workpiece with larger diameters.
- Adopting high precision double bearings in its structure to achieve higher accuracy, rigidity and stability.

